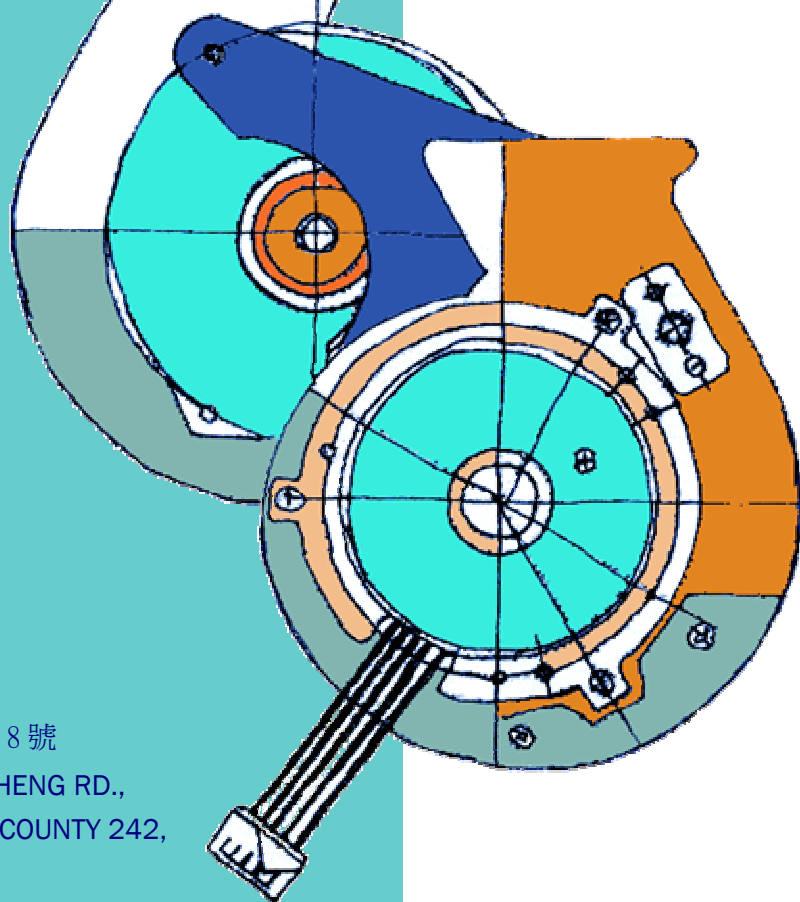




RTL Technologies, Inc.

瑞特力科技股份有限公司

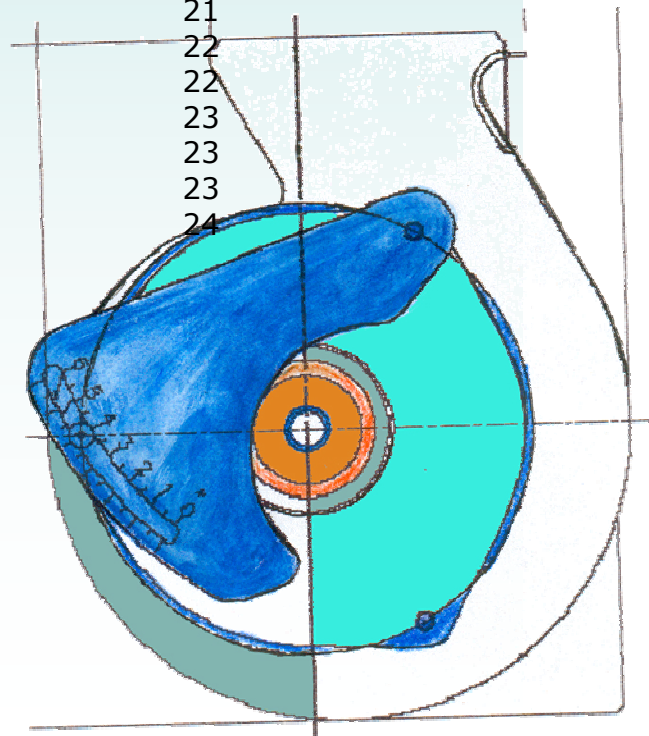
TECH



台北縣新莊市中正 721 巷 8 號
NO.8, LANE 721, JHONGJHENG RD.,
SINJHUANG CITY, TAIPEI COUNTY 242,
TAIWAN (R.O.C.)
TEL. 886-2-2902-8588
FAX. 886-2-2902-9088

TABLE OF CONTENTS

COMPANY PROFILE	3
COMPANY HISTORY	4
QUALITY ASSURANCE	5
FEATURED PRODUCTS	
BRUSHLESS PUMP MOTOR	6, 7, 8
BRUSHLESS BLOWER	9, 10
INDUSTRIAL BRUSHLESS BLOWER	11
SERVER MOTOR	12
MINI PUMP	13
BLOWER FOR HEATER	14
STARTER MOTOR	15
MACHINERY FACILITIES	
BALANCING ROTARY MACHINE	16
WINDING MACHINE	17, 18, 19
HEAT TREATING FURNACE	19
NOISE TESTER	19
WINDING TESTER	20
TESTING AND DATA ACQUISITION SYSTEM	20
TORQUE POWER DENSITY TESTER	21
AC/DC POWER SUPPLIER	21
MOTOR ANALYZER	22
MOTOR STATOR TESTER	22
MAGNETIC TESTER	23
MAGNETIZER	23
3D MAGNET ANALYZER	23
INSPECTOR INSTRUMENT	24



Company Profile

RTL Technologies is a privately-owned manufacturer of high quality permanent DC motors in Taiwan (Taipei). RTL is extremely relationship-oriented and prides itself in providing unparalleled services and attention to its customers.

The company employs approximately 50 people with an annual turnover of three million US Dollar and has achieved the goal to export full range of products to overseas market worldwide.

RTL Technologies, Inc. researches low cost Brushless DC Motor technology. Based on its long and rich history in the innovative development, feasible research and an in-depth understanding of

Brushless Motor, RTL Technologies, Inc. has proven to be a reliable authority in Brushless Motor across a variety of markets.

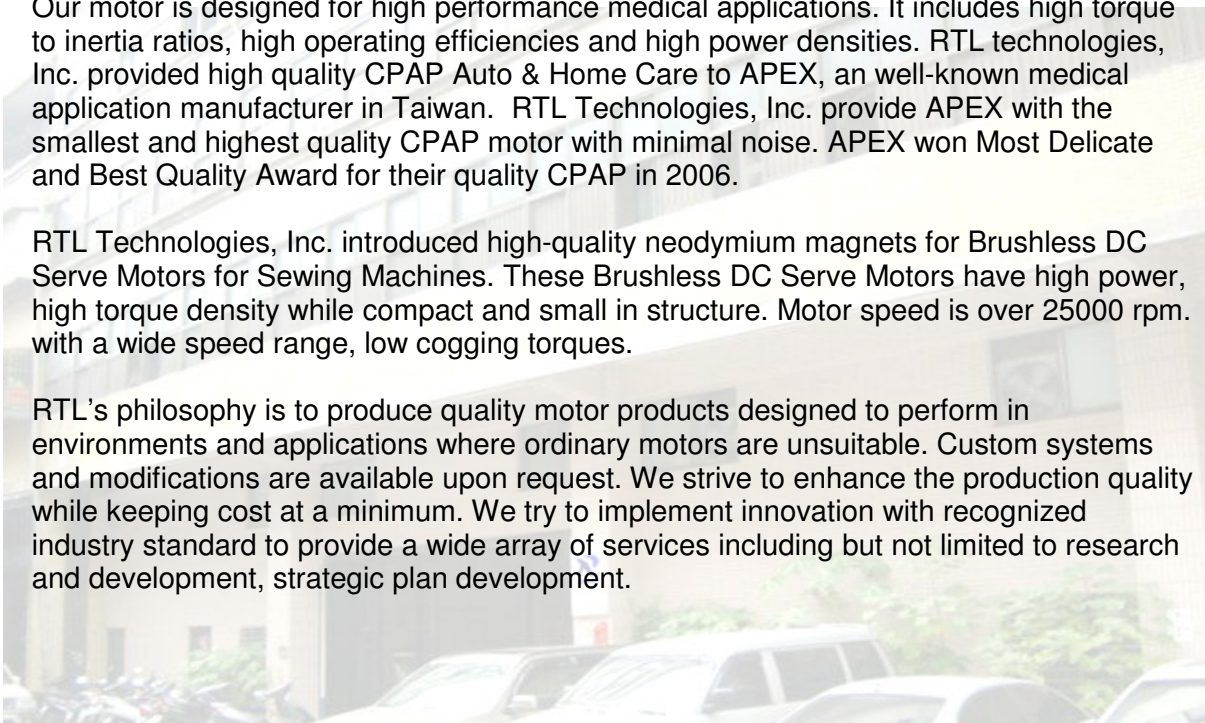


RTL Technologies, Inc. is a leading ISO 9001-certified manufacturer of small, brushless, coreless, iron-core motors for a wide range of applications such as commercial, industrial, professional and medical applications.

Our motor is designed for high performance medical applications. It includes high torque to inertia ratios, high operating efficiencies and high power densities. RTL technologies, Inc. provided high quality CPAP Auto & Home Care to APEX, an well-known medical application manufacturer in Taiwan. RTL Technologies, Inc. provide APEX with the smallest and highest quality CPAP motor with minimal noise. APEX won Most Delicate and Best Quality Award for their quality CPAP in 2006.

RTL Technologies, Inc. introduced high-quality neodymium magnets for Brushless DC Serve Motors for Sewing Machines. These Brushless DC Serve Motors have high power, high torque density while compact and small in structure. Motor speed is over 25000 rpm. with a wide speed range, low cogging torques.

RTL's philosophy is to produce quality motor products designed to perform in environments and applications where ordinary motors are unsuitable. Custom systems and modifications are available upon request. We strive to enhance the production quality while keeping cost at a minimum. We try to implement innovation with recognized industry standard to provide a wide array of services including but not limited to research and development, strategic plan development.



Company History

Established in 1990, RTL Technologies Inc. is a solely invested enterprise of Taiwan Suitai Electronics Co., Ltd. Its legal representative, Lin Sheng Chou, invested US\$300,000 with a total capital investment of 1.5 million US dollars. RTL Technologies, Inc.'s main enterprise is to develop high potential, high efficiency and high power Brushless DC Motor of better-quality and lower-cost.

YEAR	COURSE
1999	• Initial development of DC Brushless Motors.
2000	• Supplied Digital Constant Temperature Control Unit for Water Heater to SAKURA of Taiwan. • Collaborated with BOAHSIN INDUSTRIAL CO.,LTD. to research and develop Brushless Motor for HYBRID IKW automobile .
2001	• Collaborated with APEX MEDICAL CORP. to research and develop CPAP (Continue Positive Airway Pressure) which consisted of CPAP Auto Type ; CPAP By Level . • Approved for funding by Industrial Sector Department of Taiwan for the New Technology Development of DC Brushless Motor for Electrical Motorcycle.
2002	• Collaborated with APEX MEDICAL CORP. to research and develop Hi-Voltage Blower for Pressure Ulsher.
2003	• Successfully developed and started production of CPAC Brushless Motor.
2004	• Attained Certificate of Registration for ISO90001 and Certificate of CE,UL and GMP approved. • Collaborated with BOAHSIN to research and develop Server Motor for Industrial Sewing Machine. • Collaborated with YAMATO SEWING MACHINE MFG. CO.,LTD—JAPAN to research and develop mini-sized server motor. • Supplied DC Brushless Pump Motor for EXCEISIOR HEALTHCARE MEDICAL GROUP CORP. and ENFIELD MEDICAL CO., LTD. • Collaborated with DPP Diener Precision Pump in Switzerland to research and develop Precision Medical Pump Motor for Dialysis Machine .
2005	• Collaborated with HOPE INDUSTRIAL CORPORATION to research and develop Roller Motor for Industrial Conveyor . • Collaborated with BLUE CROSS – JAPAN to research and develop DC Brushless Pump for Phlegm Machine . • Passed DPP Product Quality Assurance Test. • Supplied Brushless Motor for Fuel Cell to ITRI-INDUSTRIAL TECHNOLOGY INSTITUTE sized server motor.
2006	• Started mass production of YAMATO SEWING MACHINE for mini-sized server motor. • Began trial production of APEX Hi-Voltage Blower. • Started mass production of APEX CPAP DC Motor. • Successfully developed Power Roller for HOPE INDUTRIAL CORP. and passed the trial order testing.

Quality Assurance

In order to obtain further development and advancing competitive strength, RTL Technologies has set high standards of policies for their own RTL teams. Strong attention to market research reports, continuous improvements on production processes and strategic analysis of the market data, has allowed for a higher standard and timely response.

Quality Management System is as follows:
2002 - ISO 9001:2000



Featured Products

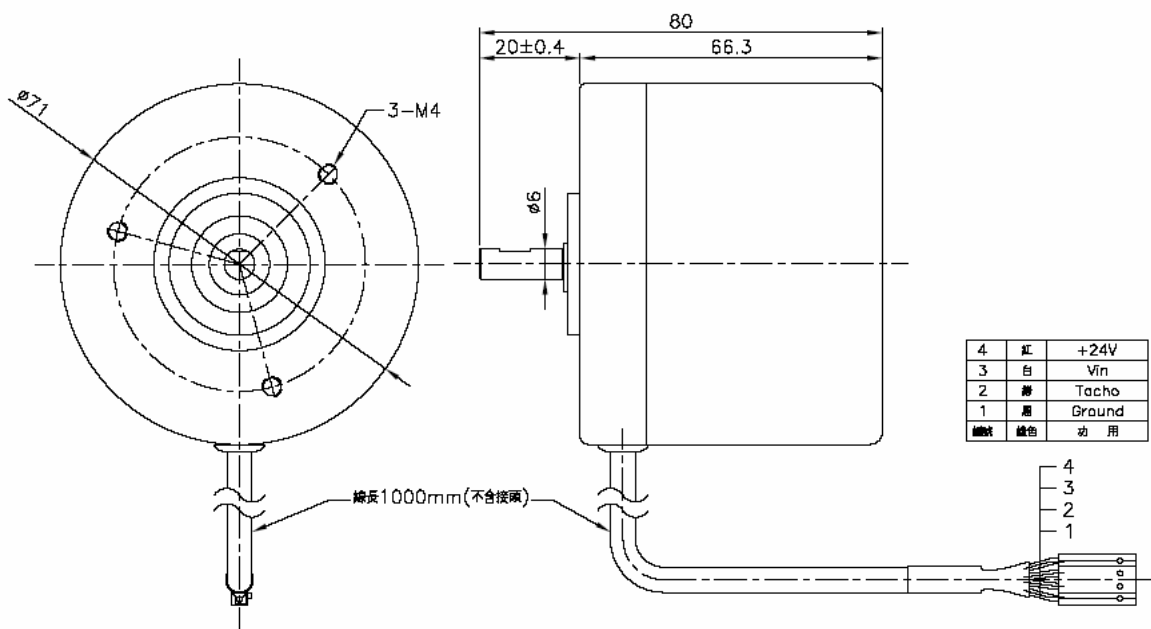
Brushless Pump Motor



SPECIFICATION:

Voltage (V) : 24V
Speed (rpm) : 6000rpm±10%
Output (W) : 35W

DRAWING:



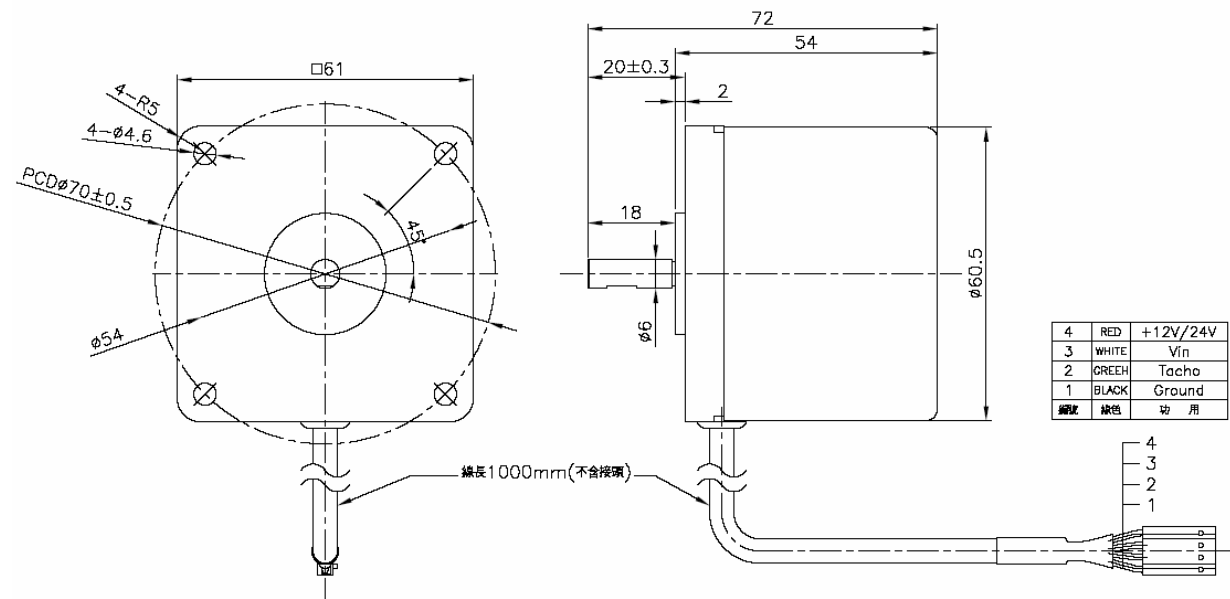
Brushless Pump Motor



SPECIFICATION:

Voltage (V) : 24V
Speed (rpm) : 4600rpm±10
Output (W) : 20W

DRAWING:



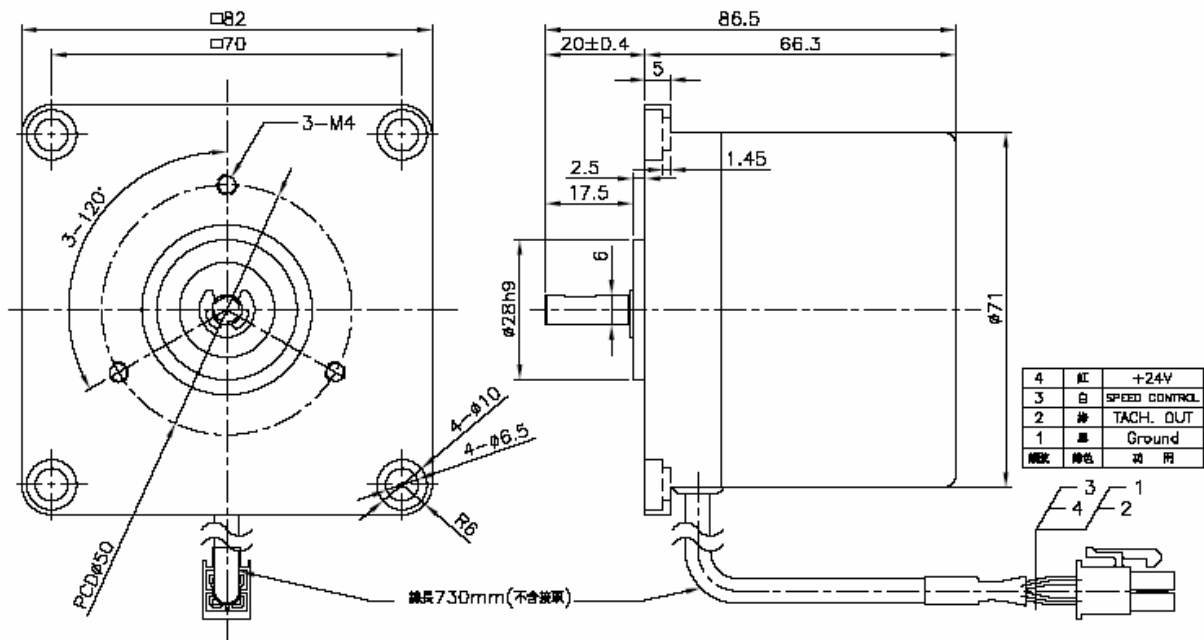
Brushless Pump Motor



SPECIFICATION:

Voltage (V) : 24V
Speed (rpm) : 3200rpm \pm 10% , 4500rpm \pm 10%
Output (W) : 35W

DRAWING:



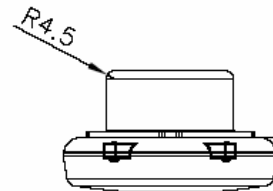
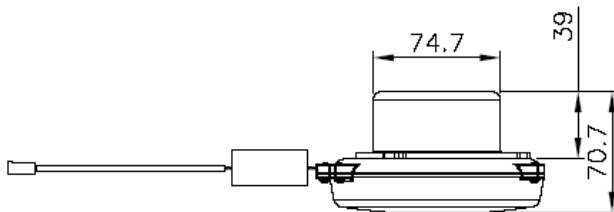
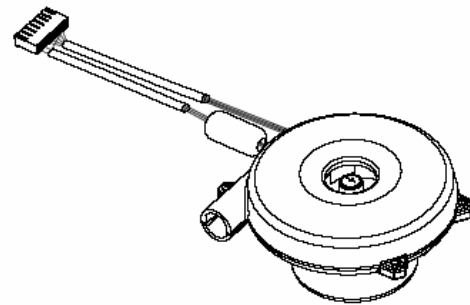
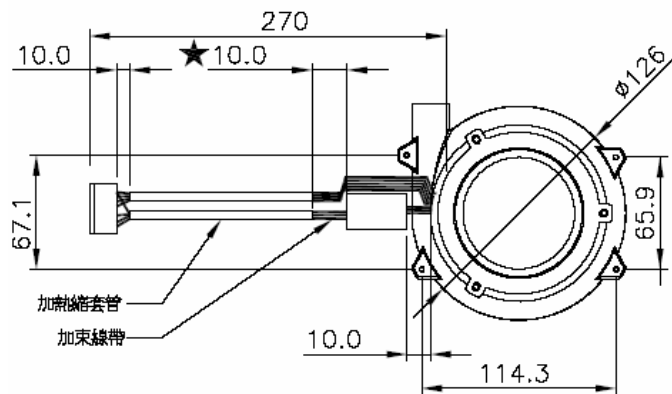
Brushless Blower



SPECIFICATION:

Voltage (V) : 24V
 Speed (rpm): 13000rpm \pm 10%
 Output (W) : 48W

DRAWING:



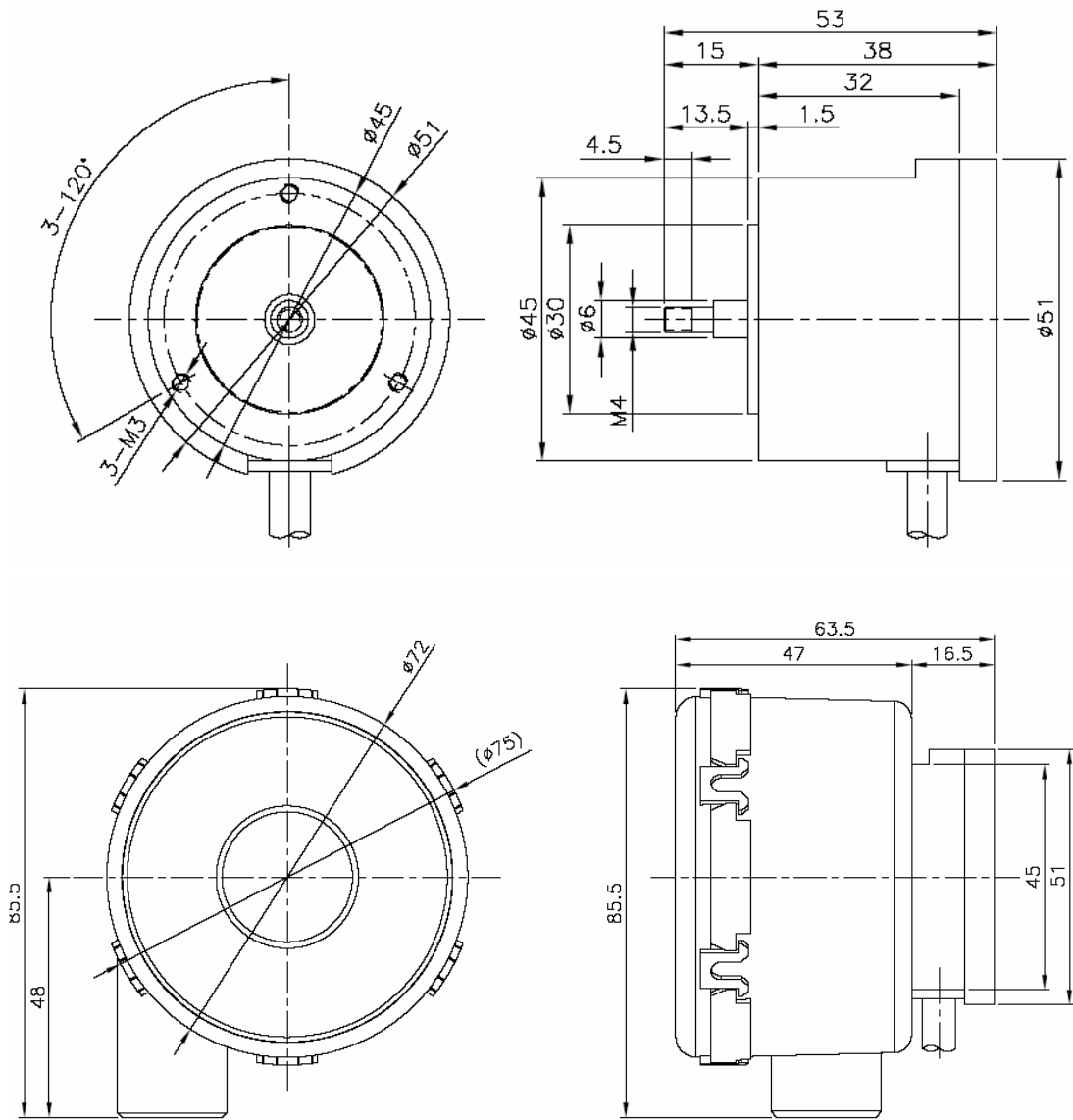
Brushless Blower



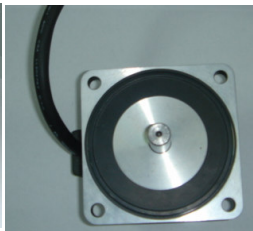
SPECIFICATION:

Voltage (V) : 24V
Speed (rpm) : 22500rpm±10%
Output (W) : 40W

DRAWING:



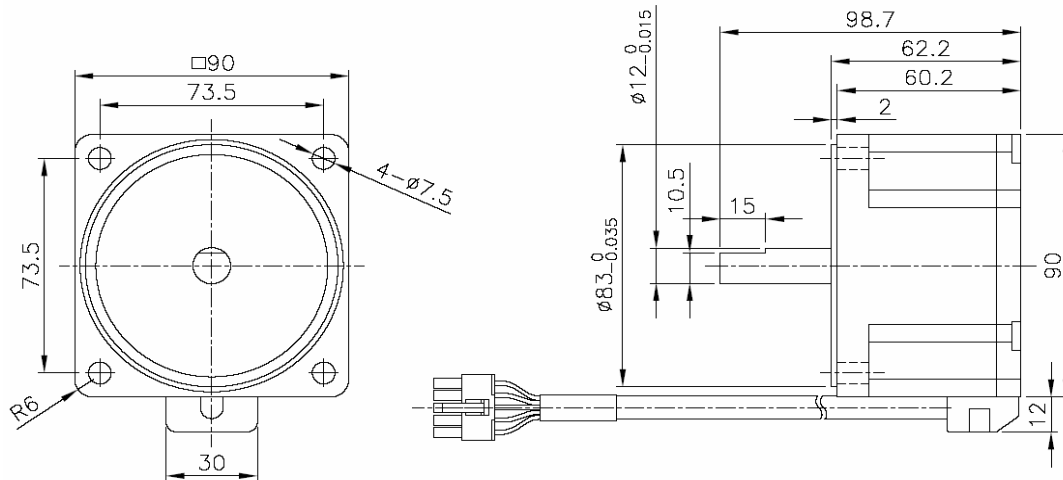
Industrial Brushless Blower



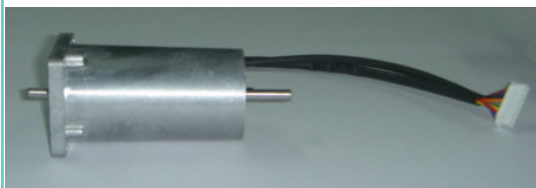
SPECIFICATION:

Voltage (V) : 110V, 220V, 24V
Speed (rpm) : 3000rpm±10%
Output (W) : 120W

DRAWING:



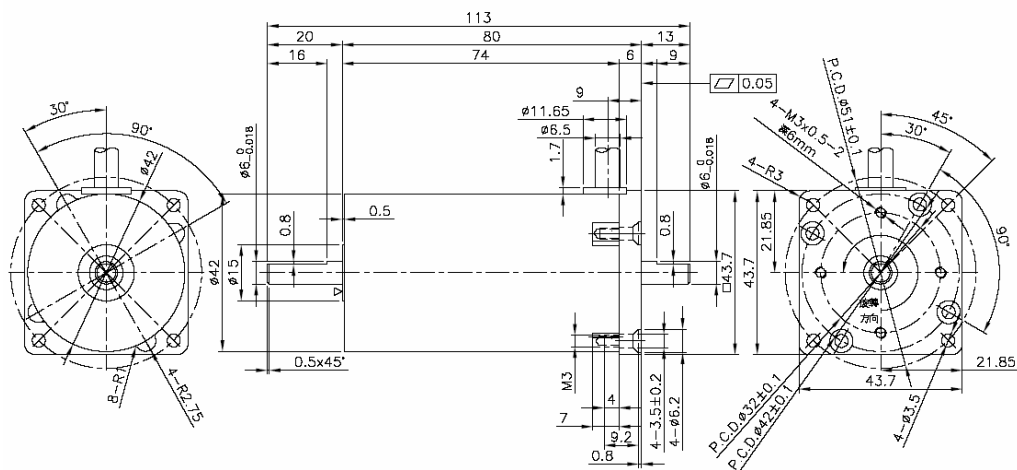
Industrial Brushless Blower



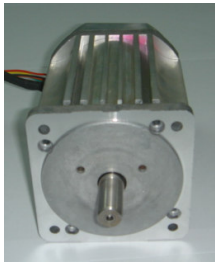
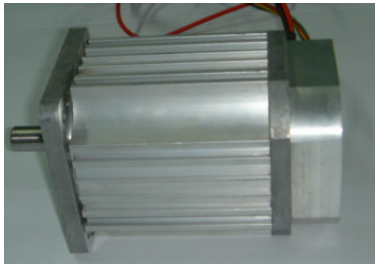
SPECIFICATION:

Voltage (V) : 24V
Speed (rpm) : 1200rpm±10%
Output (W) : 10W

DRAWING:



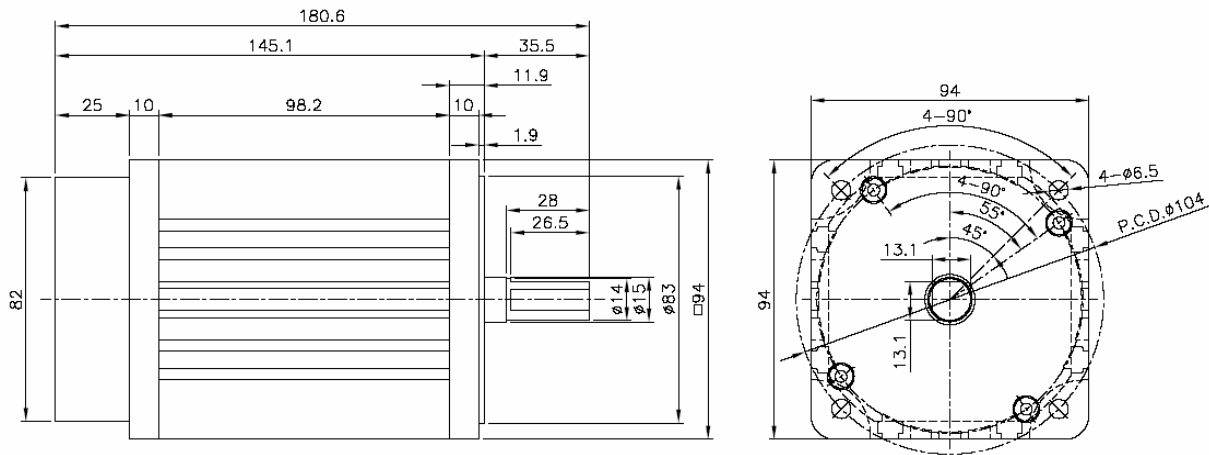
Server Motor



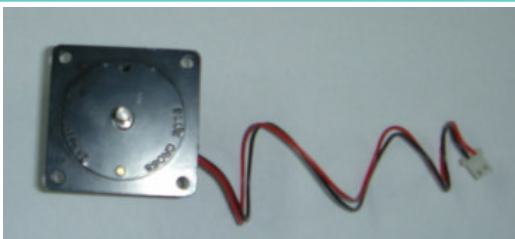
SPECIFICATION:

Voltage (V) : 220V
Speed (rpm) : 4000rpm \pm 10%
Output (W) : 1hp

DRAWING:



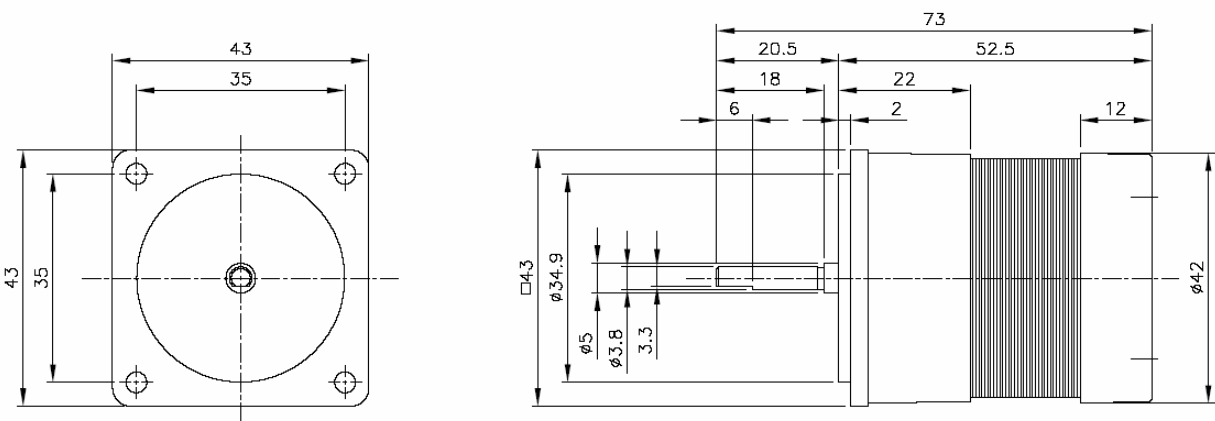
Mini Pump



SPECIFICATION:

Voltage (V) : 12V
Speed (rpm): 3700rpm±10%
Output (W) : 7W

DRAWING:



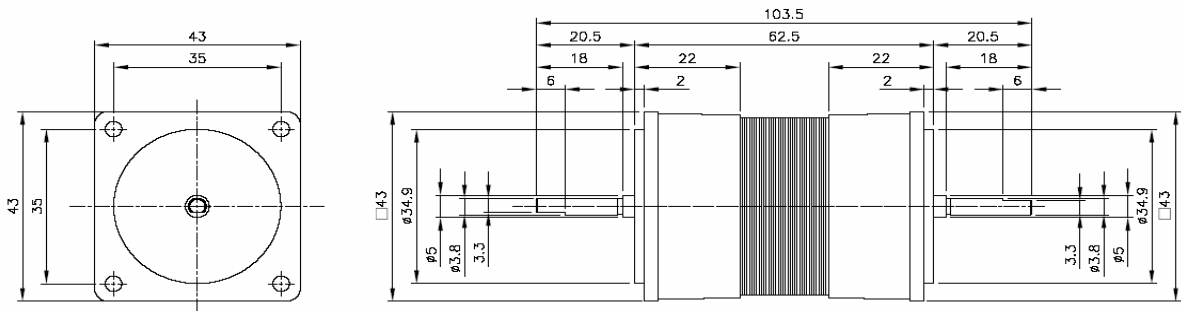
Mini Pump

SPECIFICATION:

Voltage (V) : 24V
Speed (rpm) : 3900rpm±10%
Output (W) : 11W



DRAWING:



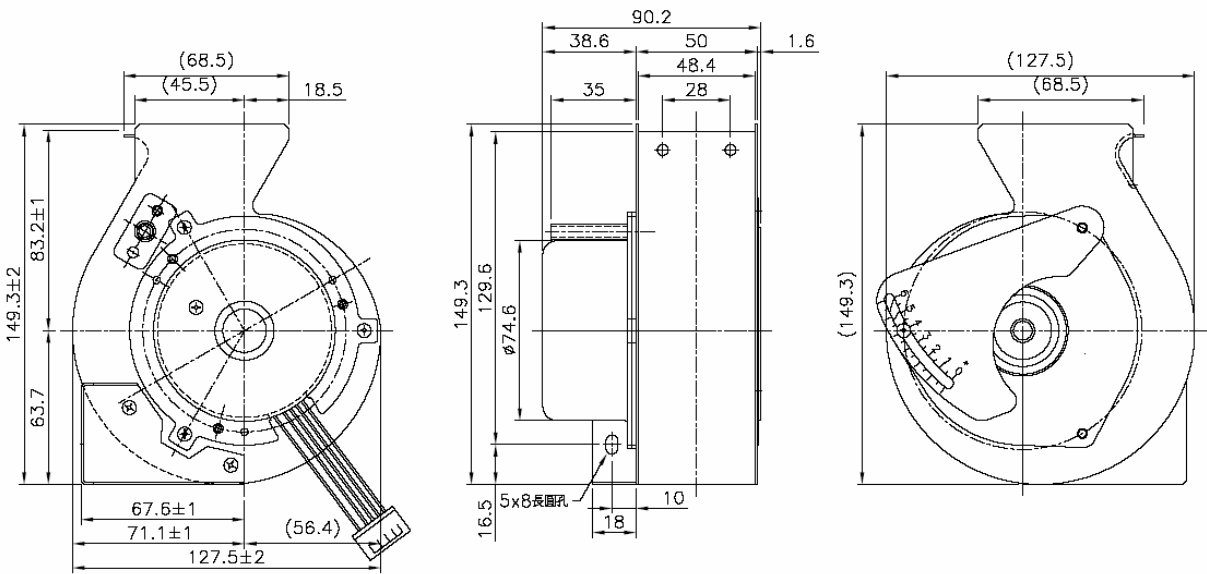
Blower for Heater



SPECIFICATION:

Voltage (V) : 40V
Speed (rpm) : 5000rpm±10%
Output (W) : 30W

DRAWING:



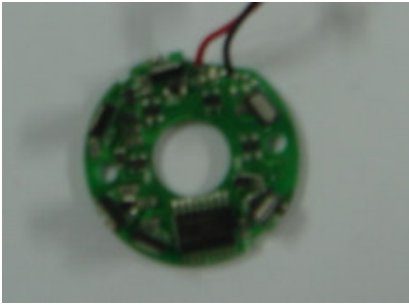
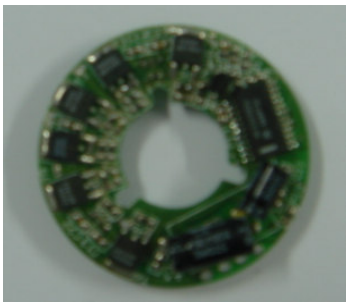
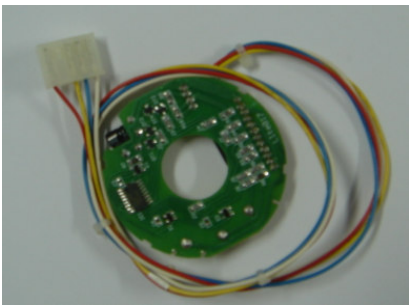
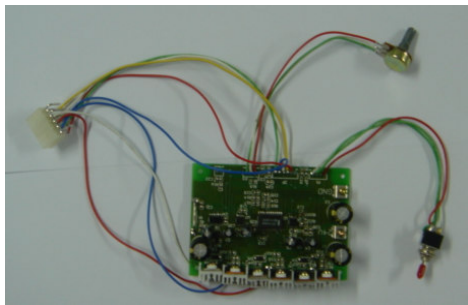
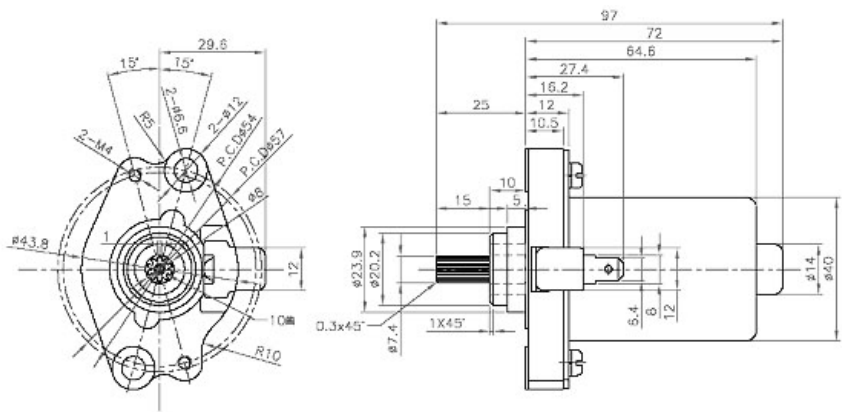
Starter Motor



SPECIFICATION:

Voltage (V): 40V
Speed (rpm): 5000rpm±10%
Output (W): 30W

DRAWING:



Machinery Facilities

Balancing Rotary Machine



Winding Machine



Winding Machine



Winding Machine



Winding Machine



Heat Treating Furnace



Noise Tester



Winding Tester



Testing and Data Acquisition System



Torque Power Density Tester



AC/DC Power Supplier



Motor Analyzer



Motor Stator Tester



Magnetic Tester



Magnetizer



3D Magnet Analyzer



Inspection Instrument

